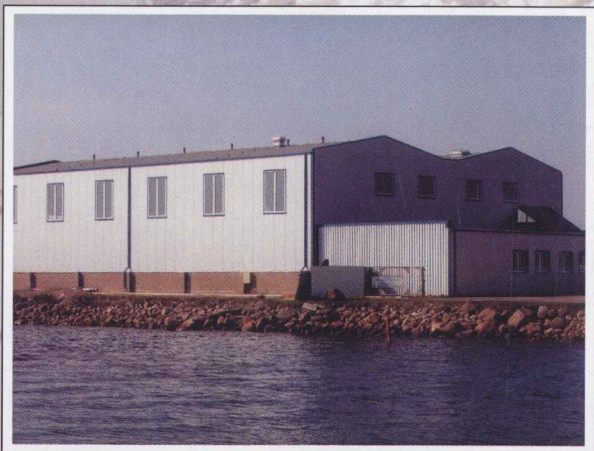




Baltic Marine Group

The modern shipyard for building aluminium boats and hulls (5-30 m) was started up on Saaremaa, one of the largest islands in the Baltic Sea, in 2002. It is fitted up with high-tech tools and modern equipment, and hires well-trained personnel to provide high-quality production.



Technical datas

- Total production area: 1,600 m²
- Slipway lifting capacity: 170 t
- Max hull length: 30 m
- Door opening height: 9 m



Modern equipment

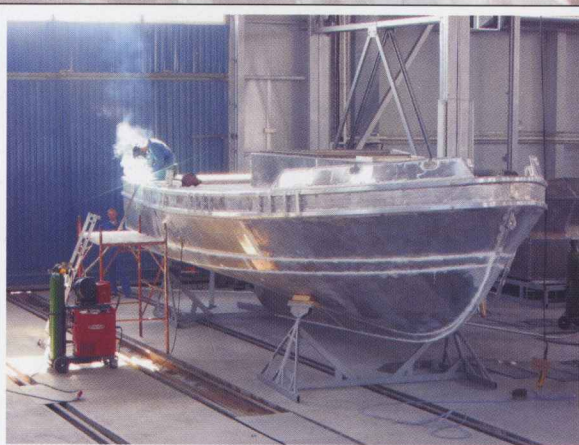


Steering house under construction for 14 m fast combat boat



15 m pilot boats hull construction

Currently, there are four 15 m aluminium ice-going pilot boats and four 5 m SAR boats under construction for Marine Alutech OY, a Finnish company. In addition to that, various hull constructions of aluminium such as wheelhouses are built under subcontracts.



15 m pilot boats hull construction



Baltic Marine Group

Office address

Maleva 1
11711 Tallinn
ESTONIA

Tel +372 (0) 659 9100
Fax +372 (0) 659 9101
e-mail bm@bm.ee

Production address

Nasva küla, Kaarma vald
93822 Saaremaa
ESTONIA
e-mail swb@tt.ee

Margus Vanaselja

General Manager

Tel +372 (0) 659 9111
GSM +372 (0) 56 211 122
e-mail margus@bm.ee

Märten Vaikmaa

Managin Director

Tel +372 (0) 45 21 144
Tel +372 (0) 659 9102
GSM +372 (0) 56 236 667
e-mail marten@bm.ee

Mark Muru

Production Manager

Tel +372 (0) 45 21 141
GSM +372 (0) 56 211 127

